

Resultat av XRF-mätningar

Projektnamn: Gusums bruk

Provtagningsdatum: 2008-09-22 - 23

XRF-mätningar utförda 22-23/9 2008 på materialprov utan förbehandling.

Röntgenfluorescensanalysator Niton 702 utrustad med ¹⁰⁹Cd-isotop

Mättid n ggr 60 n.sek, där n = antal parallellmätningar per prov, n.sek = nominella sekunder (sekunder korrigerade för isotopens sönderfall)

Halter i mg/kg

Punkt	n	As	Pb	Cd	Cr	Cu	Ni	Zn
B101tg	3	< 20	82 ± 25	< 72	< 250	< 120	< 140	690 ± 78
B106f	3	< 23	140 ± 29	< 69	< 240	390 ± 95	< 130	2 700 ± 130
B107f	3	< 16	< 32	< 83	< 260	< 140	< 140	390 ± 70
B203f	3	< 62	500 ± 78	300 ± 86	< 790	< 340	< 370	190 000 ± 1 600
C101f	3	< 76	1 300 ± 98	150 ± 72	< 500	< 210	< 250	57 000 ± 710
C104f	3	460 ± 98	2 900 ± 120	< 74	16 000 ± 830	310 ± 100	< 150	880 ± 89
C103 tr	3	< 6	12 ± 8	< 32	< 81	< 37	< 43	1 400 ± 60
D101f	3	< 120	2 600 ± 160	< 110	< 590	< 220	< 230	37 000 ± 730
D202f	3	390 ± 180	6 000 ± 230	160 ± 76	< 650	< 250	< 280	77 000 ± 970
D302f	2	230 ± 89	1 500 ± 110	110 ± 68	< 510	< 210	< 210	35 000 ± 620
D402f	3	< 18	140 ± 23	< 47	< 170	< 68	< 73	6 900 ± 170
DX0f	3	< 73	650 ± 93	< 120	< 500	< 220	< 250	17 000 ± 540
E102tg	2	110 ± 71	800 ± 88	< 100	< 440	< 190	< 200	24 000 ± 550
E101btg	2	< 42	210 ± 54	160 ± 82	1 300 ± 570	1 700 ± 240	430 ± 200	6 700 ± 330
E105f	2	< 88	810 ± 110	< 130	< 560	< 250	< 280	26 000 ± 730
E106tr	2	< 43	400 ± 67	< 110	< 350	280 ± 140	< 190	3 400 ± 220
E104tg	2	< 20	42 ± 23	< 78	< 280	170 ± 96	< 150	300 ± 64
GX04f	2	< 140	1 400 ± 180	< 190	< 1 200	< 490	< 610	200 000 ± 2 500
H001btg	3	< 30	130 ± 36	< 89	2 000 ± 420	900 ± 150	320 ± 140	2 700 ± 170
H003tg	2	< 29	< 51	< 120	< 470	< 220	< 210	4 600 ± 220
H004btg	2	< 34	160 ± 42	< 100	680 ± 330	2 800 ± 240	220 ± 140	2 500 ± 180
H002btg	2	< 32	130 ± 40	< 98	860 ± 360	2 100 ± 220	< 200	2 800 ± 190
H102f	3	< 310	4 400 ± 410	720 ± 220	4 900 ± 2 000	< 980	< 1 100	480 000 ± 4 800
H201btg	3	< 27	50 ± 33	< 110	< 420	660 ± 170	250 ± 160	1 600 ± 160

Resultat av XRF-mätningar

Punkt	n	As	Pb	Cd	Cr	Cu	Ni	Zn
H205f	2	< 150	950 ± 190	620 ± 190	< 2 300	< 890	< 1 200	640 000 ± 5 000
H202f	2	< 170	1 000 ± 220	560 ± 210	< 3 000	< 910	< 1 100	530 000 ± 5 200
H203btg	2	400 ± 100	1 600 ± 120	< 110	< 470	3 300 ± 280	< 250	25 000 ± 570
L103btg	2	< 69	880 ± 89	< 99	1 200 ± 410	3 200 ± 260	< 240	23 000 ± 540
L102f	2	< 97	880 ± 130	220 ± 110	< 790	< 360	< 390	62 000 ± 1 100
K001btg	3	< 16	< 29	< 91	< 300	< 150	250 ± 130	< 79
K104f	2	< 17	86 ± 22	< 61	< 210	490 ± 85	< 120	2 000 ± 110
K103f	2	< 70	530 ± 94	< 140	< 520	1 700 ± 270	< 280	42 000 ± 880
K102tg	2	< 25	78 ± 33	< 96	< 310	700 ± 150	< 180	9 500 ± 310
K106btg	2	300 ± 92	1 600 ± 110	< 97	580 ± 310	2 400 ± 230	1 500 ± 240	1 400 ± 150
K202f	1	< 120	990 ± 170	260 ± 140	< 1 100	610 ± 370	< 540	140 000 ± 2 300
M102btg	2	110 ± 64	670 ± 79	< 99	930 ± 350	960 ± 170	< 190	2 000 ± 170
M104tg	2	< 22	< 43	< 100	< 350	< 180	< 170	660 ± 110
M103f	2	< 77	560 ± 95	< 140	< 770	< 340	< 380	110 000 ± 1 500
M203btg	2	170 ± 76	1 000 ± 94	< 99	730 ± 340	13 000 ± 460	800 ± 200	8 500 ± 320
M202f	2	< 160	1 200 ± 210	< 250	3 500 ± 1 600	< 770	1 900 ± 740	270 000 ± 3 600
M205btg	2	56 ± 35	160 ± 42	< 96	< 420	2 600 ± 280	49 000 ± 1 200	4 400 ± 230
M206tg	1	< 16	< 30	< 75	< 250	< 130	< 130	77 ± 46
M301tg	2	< 24	< 46	< 130	< 430	< 210	< 200	< 120
M302f	2	< 170	1 400 ± 230	490 ± 190	< 2 400	< 780	< 1 000	390 000 ± 4 100

Resultat av XRF-mätningar

Punkt	Hg	Sb	Sn	Fe	Mn	Ag	Co	Rb	Se
B101tg	< 16	< 190	< 160	11 000 ± 540	< 240	< 62	< 320	38 ± 9	< 9
B106f	< 16	< 190	< 150	12 000 ± 520	< 250	< 59	< 310	48 ± 9	< 10
B107f	< 17	330 ± 150	230 ± 120	2 300 ± 330	< 270	130 ± 48	< 220	30 ± 9	< 10
B203f	< 67	870 ± 230	820 ± 190	23 000 ± 1 100	< 730	250 ± 74	< 780	29 ± 13	< 20
C101f	< 39	510 ± 190	330 ± 160	6 700 ± 580	< 410	130 ± 62	< 410	< 13	< 17
C104f	< 20	< 160	< 160	34 000 ± 940	630 ± 420	< 63	< 550	220 ± 18	< 16
C103 tr	< 6	< 120	< 68	< 100	< 83	< 26	< 48	< 3	< 3
D101f	< 39	370 ± 200	< 250	8 500 ± 720	< 480	< 98	< 510	29 ± 13	< 22
D202f	< 48	620 ± 200	530 ± 170	14 000 ± 840	< 560	150 ± 66	< 580	29 ± 13	< 28
D302f	< 31	490 ± 180	260 ± 150	9 500 ± 670	< 430	130 ± 59	< 460	25 ± 11	< 18
D402f	< 11	< 180	< 99	1 100 ± 170	< 150	< 38	< 120	< 4	< 5
DX0f	< 32	< 300	< 270	14 000 ± 960	< 420	< 110	< 620	27 ± 13	< 20
E102tg	< 28	340 ± 180	< 230	4 400 ± 530	< 400	< 89	< 400	42 ± 12	< 15
E101btg	< 32	660 ± 220	330 ± 180	200 000 ± 3 300	1 700 ± 630	170 ± 70	< 1 900	56 ± 15	< 17
E105f	< 45	< 330	< 290	13 000 ± 1 000	< 500	< 110	< 660	20 ± 13	< 20
E106tr	< 23	340 ± 190	270 ± 160	13 000 ± 830	< 360	< 89	< 490	< 12	< 14
E104tg	< 16	< 380	< 170	33 000 ± 990	520 ± 240	< 67	< 570	150 ± 16	< 11
GX04f	< 100	520 ± 330	590 ± 280	20 000 ± 1 600	< 1 100	180 ± 110	< 1 300	< 27	< 32
H001btg	< 24	< 250	< 200	27 000 ± 1 000	950 ± 340	< 77	< 610	57 ± 12	< 11
H003tg	< 29	< 300	< 260	12 000 ± 900	< 500	< 100	< 510	50 ± 15	< 17
H004btg	< 24	< 260	230 ± 150	27 000 ± 1 100	900 ± 350	< 86	< 630	54 ± 13	< 14
H002btg	< 25	< 390	< 220	37 000 ± 1 300	< 480	< 83	< 710	56 ± 13	< 15
H102f	< 200	1 900 ± 570	1 600 ± 470	31 000 ± 2 600	2 700 ± 1 700	400 ± 180	< 2 100	< 43	< 70
H201btg	< 27	< 520	< 230	21 000 ± 1 100	550 ± 320	< 92	< 630	52 ± 14	< 15

Resultat av XRF-mätningar

Punkt	Hg	Sb	Sn	Fe	Mn	Ag	Co	Rb	Se
H205f	< 190	2 100 ± 510	1 900 ± 420	22 000 ± 2 200	< 1 900	500 ± 170	< 1 900	< 41	< 50
H202f	< 210	1 900 ± 550	1 900 ± 460	20 000 ± 2 300	< 2 300	350 ± 180	< 2 100	< 45	< 69
H203btg	< 30	< 280	< 230	21 000 ± 1 000	650 ± 350	110 ± 61	< 600	65 ± 15	< 18
L103btg	< 28	< 350	< 220	13 000 ± 800	< 460	< 84	< 530	54 ± 13	< 14
L102f	< 63	470 ± 280	460 ± 230	18 000 ± 1 300	< 700	180 ± 92	< 870	33 ± 17	< 23
K001btg	< 19	300 ± 160	220 ± 130	5 500 ± 490	< 290	100 ± 52	< 310	53 ± 12	< 12
K104f	< 14	< 210	< 130	2 600 ± 280	< 180	< 51	< 180	< 6	< 7
K103f	< 44	< 310	< 300	4 900 ± 720	< 540	< 110	< 510	89 ± 19	< 20
K102tg	< 24	< 270	< 210	4 100 ± 480	< 310	85 ± 55	< 320	37 ± 11	< 13
K106btg	< 22	< 360	260 ± 140	18 000 ± 920	< 410	< 83	< 570	73 ± 15	< 17
K202f	< 99	880 ± 370	790 ± 310	4 200 ± 980	< 870	< 180	< 870	< 31	< 30
M102btg	< 25	< 260	< 220	17 000 ± 900	< 450	< 85	< 540	74 ± 15	< 15
M104tg	< 24	300 ± 180	< 220	4 800 ± 550	< 340	< 88	< 360	51 ± 13	< 13
M103f	< 63	580 ± 250	< 300	23 000 ± 1 300	< 700	< 120	< 870	< 19	< 21
M203btg	< 26	330 ± 180	290 ± 150	24 000 ± 1 000	490 ± 320	< 85	< 580	85 ± 15	< 17
M202f	< 150	< 530	1 200 ± 380	29 000 ± 2 400	< 1 600	< 210	< 1 700	< 39	< 46
M205btg	< 23	< 230	< 210	16 000 ± 840	< 460	< 83	< 540	48 ± 12	< 15
M206tg	< 17	< 250	< 160	21 000 ± 770	430 ± 210	< 64	< 440	130 ± 14	< 11
M301tg	< 30	< 600	< 280	11 000 ± 920	< 500	< 110	< 550	83 ± 19	< 16
M302f	< 170	1 600 ± 510	1 600 ± 430	18 000 ± 2 000	< 2 000	440 ± 170	< 1 700	< 44	< 51

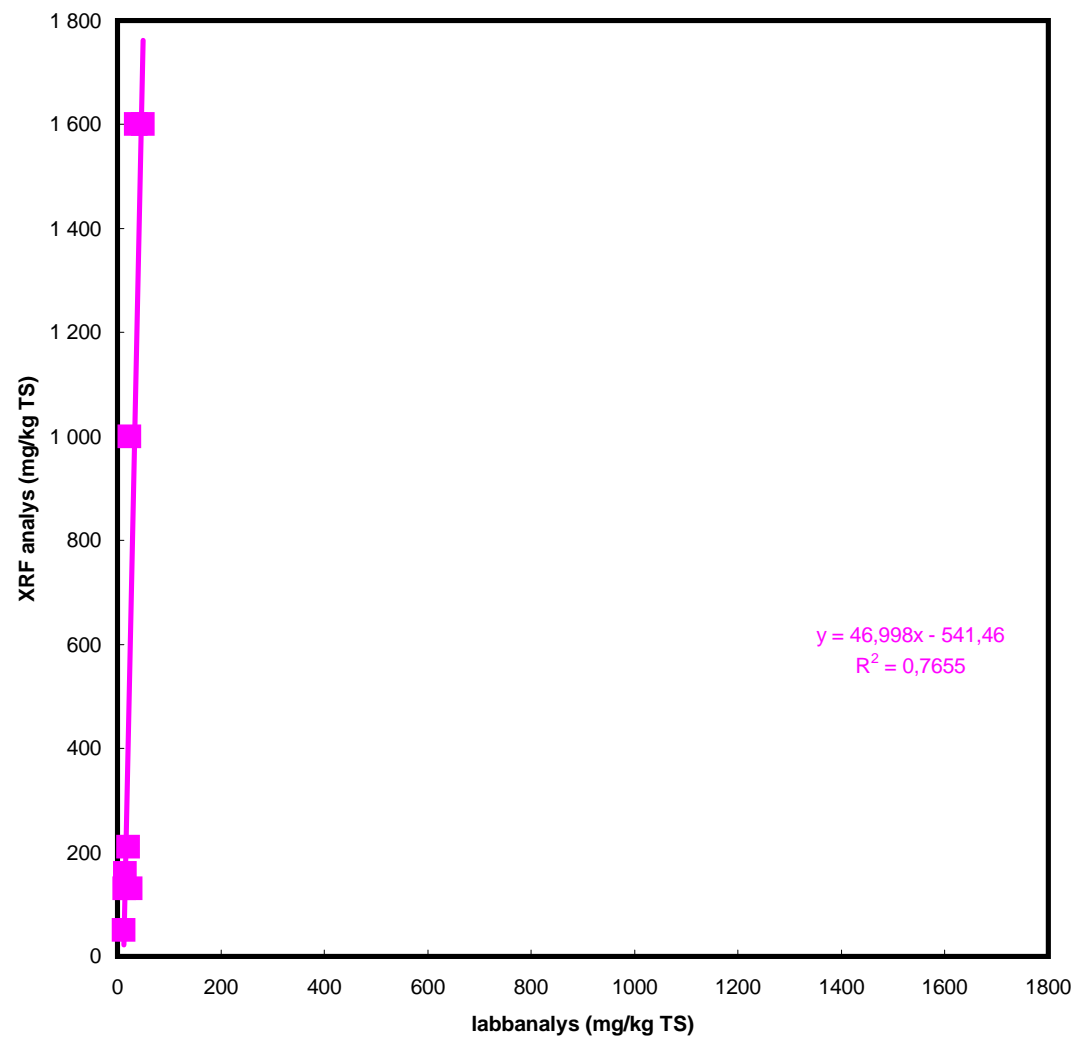
Resultat av XRF-mätningar

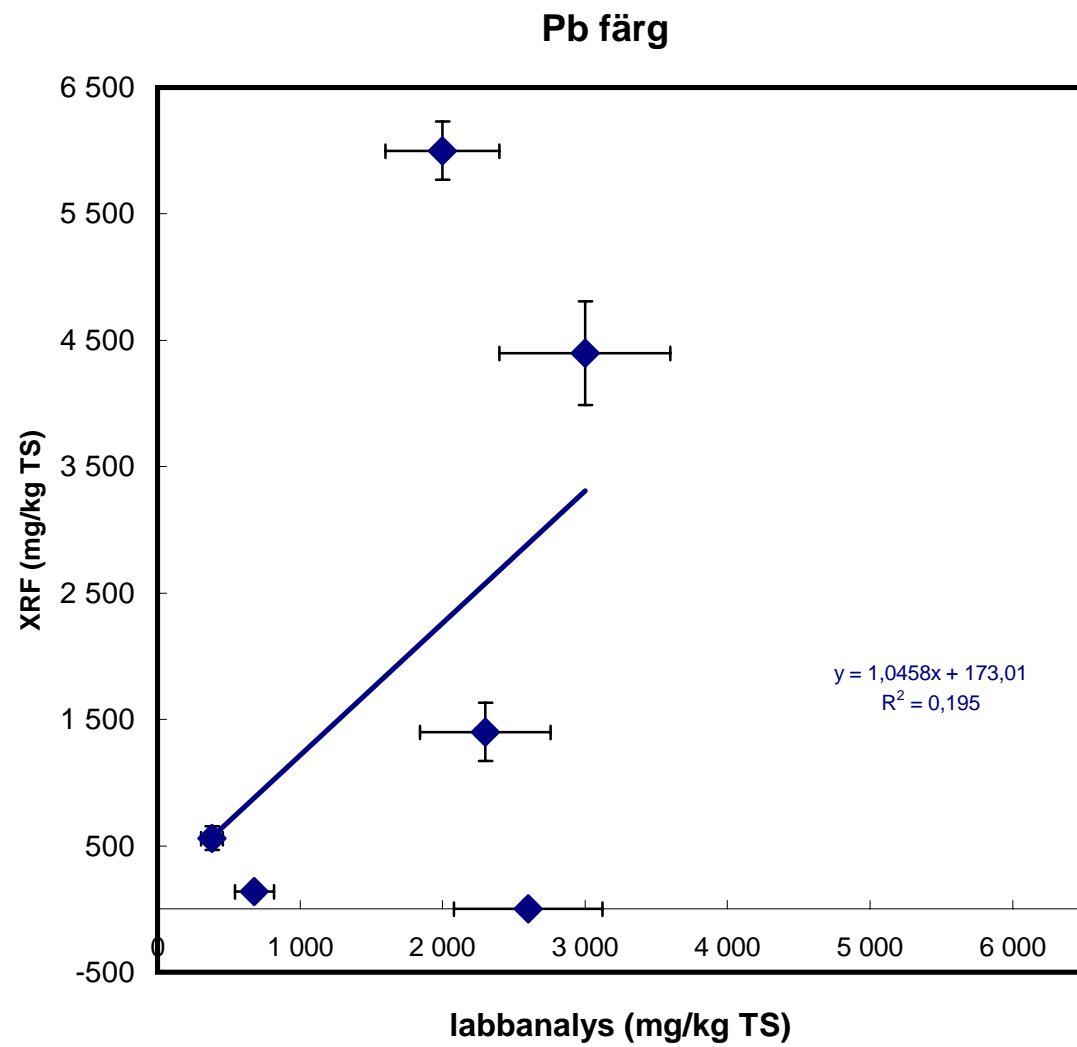
Punkt	Sr
B101tg	230 ± 23
B106f	140 ± 19
B107f	96 ± 20
B203f	330 ± 31
C101f	220 ± 29
C104f	65 ± 18
C103 tr	< 7
D101f	240 ± 33
D202f	400 ± 36
D302f	450 ± 36
D402f	49 ± 13
DX0f	260 ± 37
E102tg	81 ± 24
E101btg	140 ± 30
E105f	54 ± 28
E106tr	< 25
E104tg	81 ± 20
GX04f	350 ± 46
H001btg	120 ± 24
H003tg	220 ± 35
H004btg	190 ± 29
H002btg	150 ± 27
H102f	1 900 ± 130
H201btg	150 ± 30

Resultat av XRF-mätningar

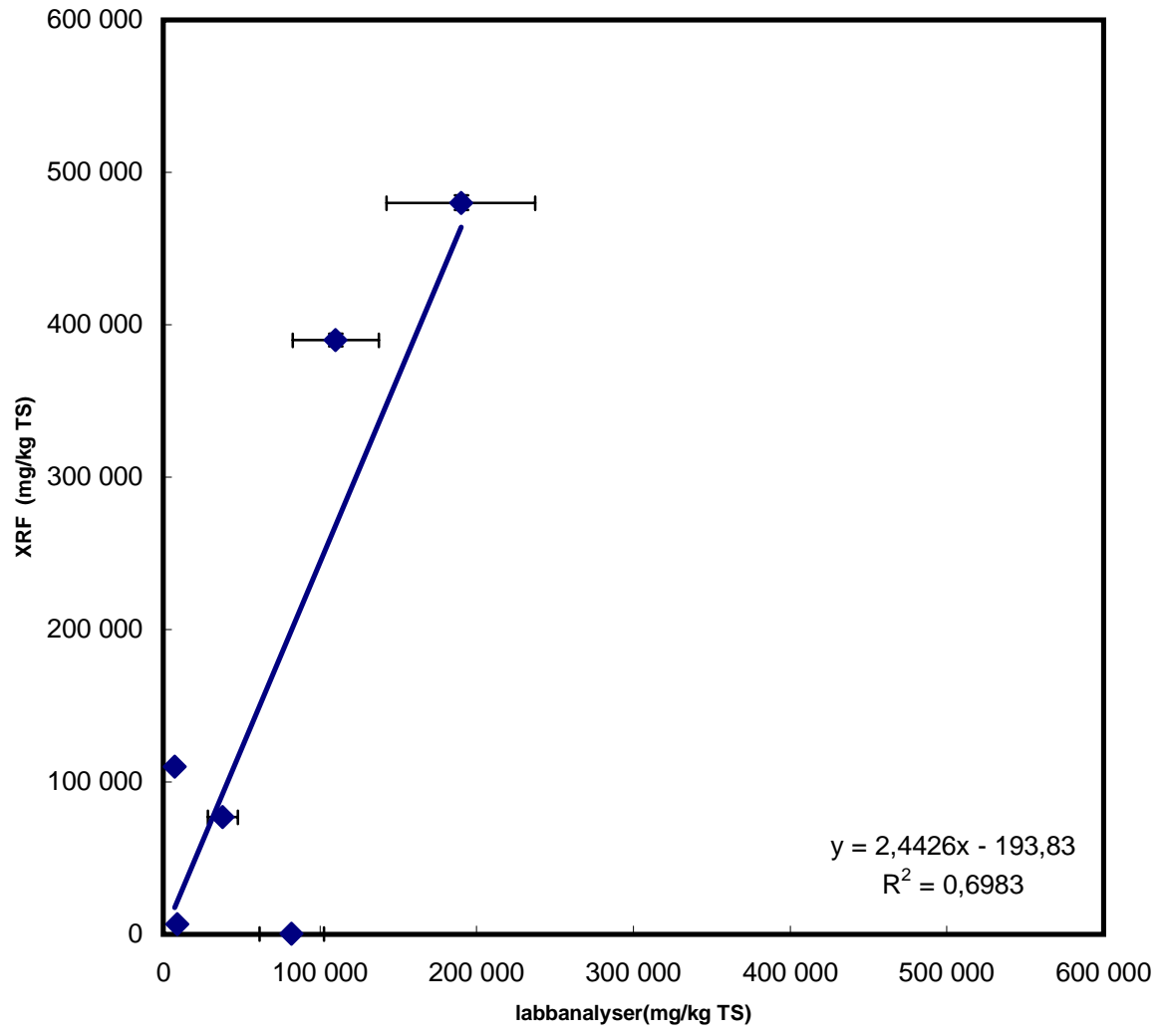
Punkt	Sr
H205f	790 ± 61
H202f	960 ± 88
H203btg	260 ± 32
L103btg	180 ± 29
L102f	250 ± 43
K001btg	200 ± 27
K104f	< 15
K103f	67 ± 29
K102tg	< 31
K106btg	110 ± 26
K202f	320 ± 51
M102btg	180 ± 29
M104tg	45 ± 24
M103f	140 ± 29
M203btg	210 ± 29
M202f	400 ± 57
M205btg	220 ± 29
M206tg	76 ± 19
M301tg	140 ± 35
M302f	760 ± 81

Pb betong





Zn färg



Zn tegel och betong

